



# Tecadis

INNOVATIVE SOLUTIONS



## PREMIER PALLET SYSTEMS LTD

## PALLET CHANGER

The Pallet Changer is specifically designed to transfer palletized loads without manual handling of the pallet itself.

It will accommodate pallets up to 1200mm in either direction with a height range of 2.0m down to 600mm. Totally automated, it represents the most advanced form of pallet exchange in our range.

The Pallet Changer is best suited to boxed or cluster-packed product and is equally effective with tubs, drums and reels.



### USES INCLUDE

- Load transfer from wood to hygienic in-house pallets
- Switching outgoing loads to shipping or expendable pallets
- Handling loads which must remain the original way up after transfer

### KEY FEATURES

- Pallet gripping system adapts automatically to all normal sizes
- Side retaining walls with optical sensors or pressure option
- Flush-to-floor loading - no ramp
- 1500kgs loading capacity.
- Smooth and effective auto-operation allowing 25 pallet per hour throughput
- Not recommended for bagged goods or thin-layered product
- Price inclusive of full guarding system

## METHOD OF OPERATION



1  
The Pallet Changer securely clamps the load



2  
The load is safely inverted



3  
The pallet is lowered to ground level



4  
The old pallet is easily removed and replaced with a new pallet



5  
The new pallet is raised to meet the load



6  
The load is lowered to ground level



7  
The Pallet Changer releases the load for easy removal



# PALLET CHANGER

## Specifications

Usable Jaw Opening	Max 2050mm Min 600mm
--------------------	-------------------------

*Larger jaw opening models can be built*

Standard Load Table	Width 1300mm Depth 1200mm
---------------------	------------------------------

Loading Capacity	1500 kgs
------------------	----------

Power Supply	3ph / 400V / 32 amp
--------------	---------------------

Motor Size	4kW
------------	-----

Weight	1800 kgs
--------	----------

Weight of standard guards	210 kgs
---------------------------	---------

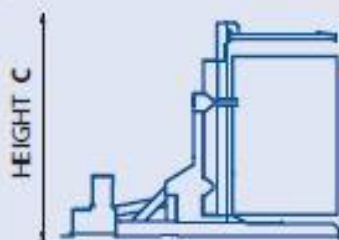
Controls	Fully-automated single touch push button control with manual override
----------	---

Actual Operating Space	Width 2.16m Depth 3.35m Height 2.75m
------------------------	--

Operating Space Including Standard Guards	A	Width 3.03m
	B	Depth 4.82m
	C	Height 2.75m

Standard Shipping Dimensions (machine only)	Width 2.16m Depth 2.45m Height 2.36m
---	--

SIDE ELEVATION



PLAN VIEW

